

Extended producer responsibility

What is EPR?

Extended producer responsibility (EPR) is a policy principle that extends producers' responsibility for their products and packaging across the entire life cycle of their product, with a particular focus on the end-of-life stage.



EPR plays a critical role in minimising waste, ensuring sustainable waste management and supporting South Africa's transition to a circular economy.

What are "producers"?

Producers are defined as stakeholders who hold responsibility over the design and production of packaging products (i.e. the packaging manufacturer), and who place those products on the market (i.e. brand owners), as well as importers and retailers of the products.



Producers are also referred to as "obliged companies".

What is a "PRO"?

Producer Responsibility Organisations (PROs), are collective organisations that bear responsibility for the implementation and management of EPR responsibilities.

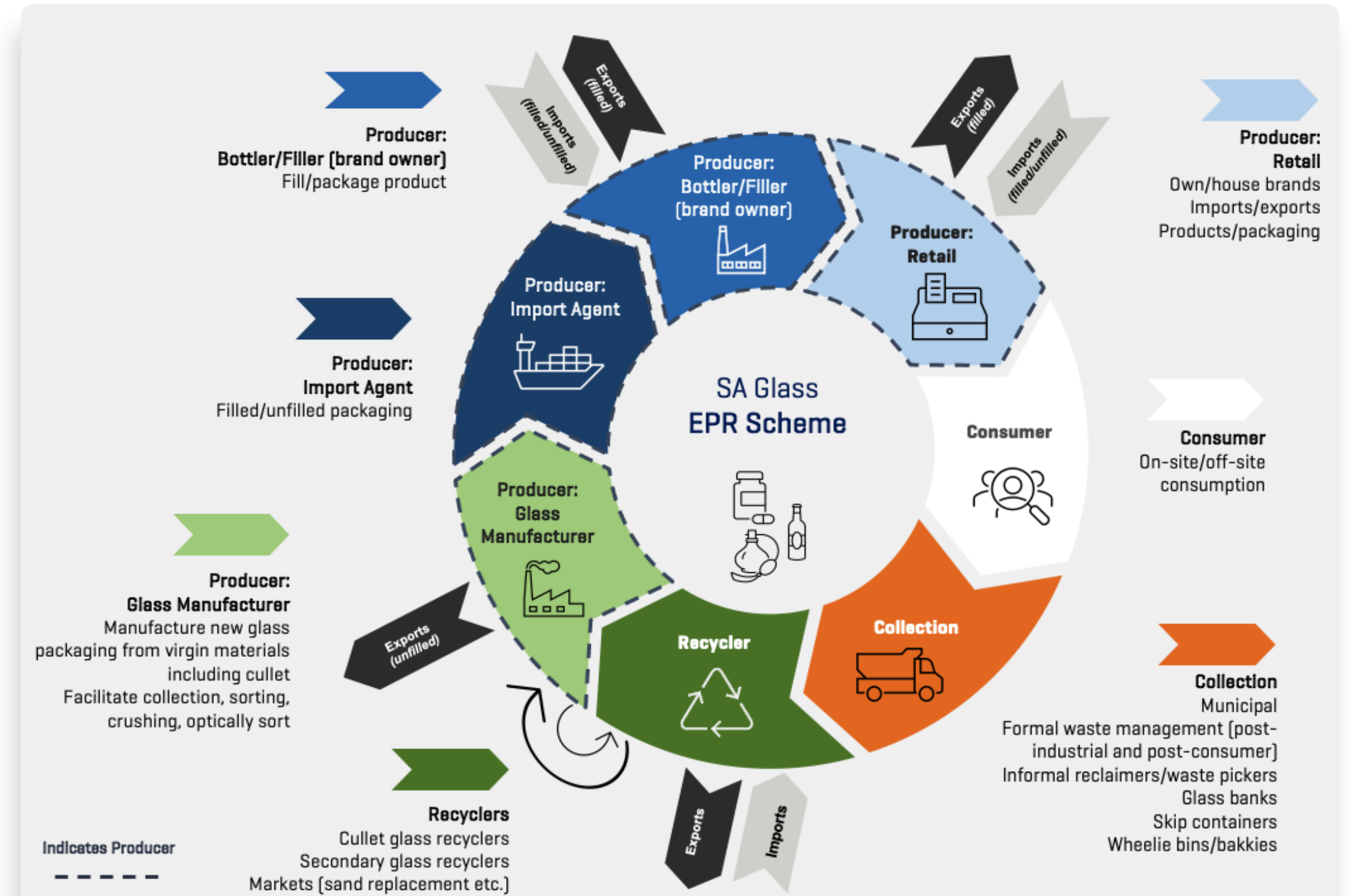
All producers are required to either join a PRO or set up their own PRO, which will require DFFE accreditation. Initially there will be a separate PRO for each of the material streams (glass, plastic, cardboard, etc.) in South Africa.

What is required of Producers/PROs?

Among other things, the regulations require Producers/PROs to:



- Ensure the effective and efficient management of identified end-of-life products
- Encourage and enable the implementation of circular economy initiatives
- Set and keep track of collection and landfill-diversion targets
- Integrate informal and formal waste-value-chain activities
- Develop secondary markets for recycled content
- Support transformation objectives in the waste value chain
- Monitor and report on waste management data, financial information and material flows



How is Ardagh Glass Packaging involved?

The Glass Recycling Company (TGRC), of which Ardagh Glass Packaging is a member, is a voluntary EPR scheme for glass packaging that was established by SA glass manufacturers and brand owners in 2005.

TGRC has established itself as a PRO in line with the regulations, which come into effect from 5 November 2021, and Ardagh Glass Packaging will continue to support circular-packaging initiatives as a member of the new organisation.

About TGRC

TGRC has been driving glass collection and recycling in SA since 2006, and has more than doubled recycling rates from 18% to 44%.

TGRC has a clear plan for facilitating the collection of all one-way glass, which makes it well qualified in terms of the requirements of EPR Schemes. The benefits to the glass industry of having access to an EPR Scheme with excellent existing infrastructure and networks will be significant.